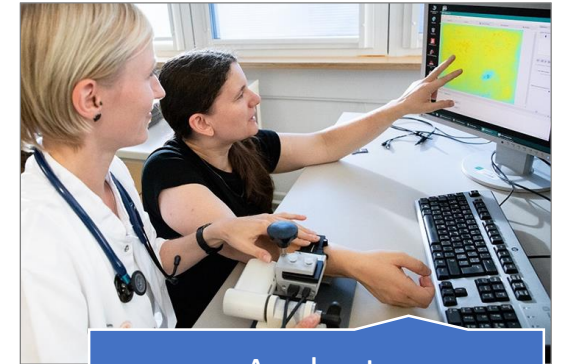


IC Design at Fraunhofer FEP: From technologies to applications

You want a perfect job *from student to PhD* in Europe's largest R&D organization

- with *flexible working hours*
- to contribute to *major societal challenges*, e.g. by designing highly energy-efficient IC
- *responsibility* and to work on your *own public and industrial projects*
- to present your research results at *international conferences*
- to work in *inter-disciplinary and receptive teams* with an outstanding work environment
- profit from our *innovative environment* with high-tech labs and mobile work



Apply at:
jobs@fep.fraunhofer.de

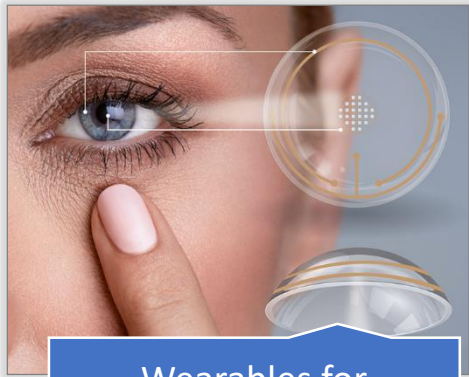


Explore with us OLED-based microdisplays and sensor components

- Custom- and application-specific device and *integrated circuitry (IC) design*
 - Analog, digital, mixed-signal, in foundry processes
- *Microdisplays & Sensors* by silicon and organic microelectronics
 - OLED-on-silicon technology
 - Augmented-/virtual-reality eyewear (AR/VR/MR)
- *CMOS-integrated optoelectronics*



www.fep.fraunhofer.de/jobs



Wearables for
Industry & Consumer



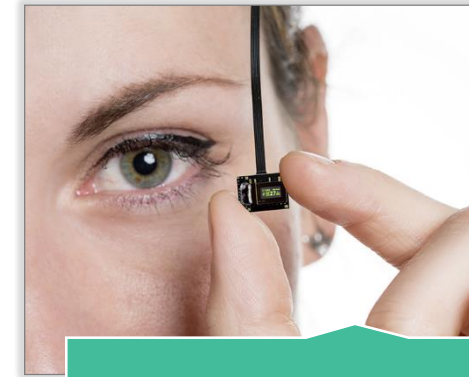
Augmented Reality



Virtual Reality



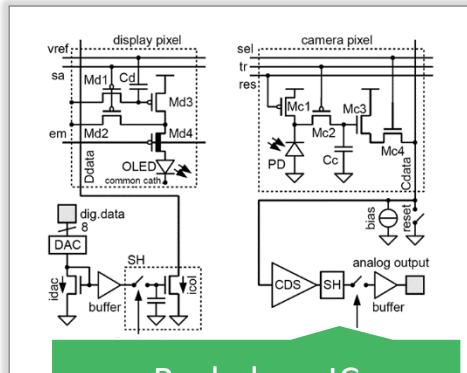
Assisted Reality



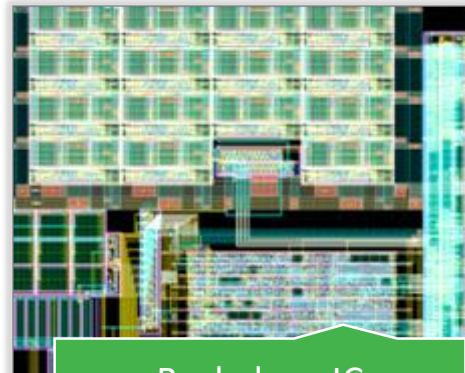
Microdisplays



Embedded Design



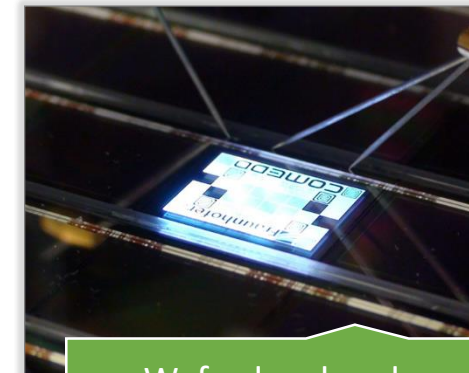
Backplane IC
Schematic Design



Backplane IC
Layout Design



Frontplane
Integration



Wafer-level and
Device Testing

Bildquellen

Folie 1

1. © Fraunhofer FEP, Foto: Claudia Jacquemin
2. © Fraunhofer FEP, Foto: Anna Schroll
3. © Fraunhofer FEP

Folie 2

1. © Lucky Business / shutterstock, Montage: Fraunhofer FEP
2. © Fraunhofer FEP, Foto: Claudia Jacquemin
3. © Jessica Lewis, Pexels
4. © Fraunhofer FEP, Foto: Claudia Jacquemin
5. © Fraunhofer FEP, Foto: Anna Schroll
6. © Fraunhofer FEP
7. © Fraunhofer FEP
8. © Fraunhofer FEP
9. © Fraunhofer FEP, Foto: Anna Schroll
10. © Fraunhofer FEP